

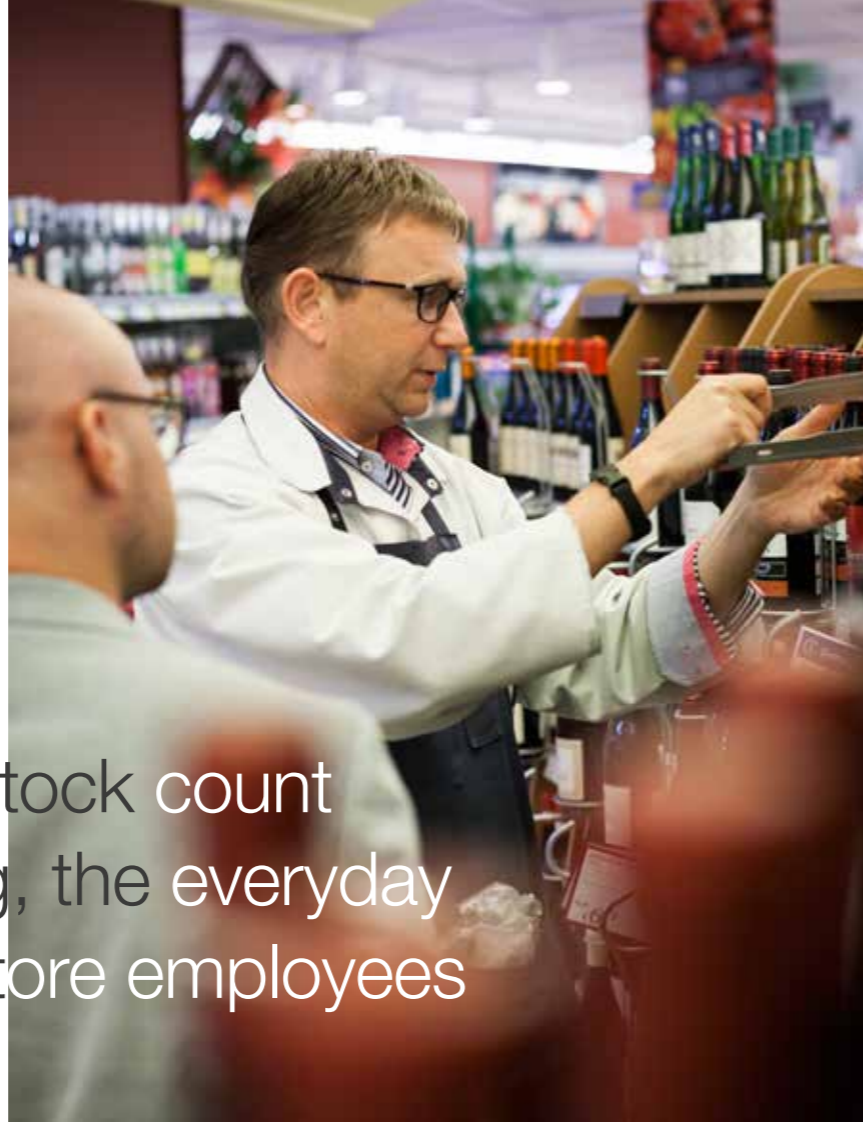


**Improve shelf
management
and product
presentation**

Facer™ - Pull & face up in one go

Reduce facing time...

Refilling, stock count and facing, the everyday tasks of store employees



...and make the most out of high maintenance categories

Save space and reduce labour

Turn browsing time into buying decisions

A better looking display encourages increased sales and with Facer™ it improves the product presentation while significantly reducing the time spent in the category.

- Facer™ also works well with shelf signage which is proven to enhance the customer journey by guiding them to products
- Reducing spaces between shelves to give a more efficient space saving display
- Products are always aligned and match the price label



Reduce facing time	Products are pulled in front of the shelf in one go
Correct product in correct place	Products remain in line thanks to width adjustable steel frames - one for each facing

Encourage purchasing decisions	The front riser facilitates consumer guiding
Ergonomic shelf management	Easy and quick management of top and bottom shelves. No strain on back and knees.



Organise labour intensive sectors easily throughout trading hours

Each line of bottles or cans are maintained in a width-adjustable steel frame hidden behind a customised riser. Frames are placed directly on the shelf and can work whichever way they are installed.



Creating an inviting and engaging section, in no time at all

The Facer™ frames are adapted to the product size and will maintain the integrity of each facing. The products are less likely to move when unintentionally bumped into. Store staff can use the Facer to pull the products to the shelf edge in one go.

27%
time saving has been measured in trial stores



Units are width adjusted by simply pulling apart. Solid front riser hides the units.



Improve category performance

Reducing the time spent on shelf and waste management improves store efficiency

The system cannot be overfilled which avoids expensive overstocking and by reducing the on-shelf spoilage it immediately improves the bottom line. Products remain within easy reach and the shelves are neat and tidy with none hidden behind neighbouring stock.



The system can be used for almost any category such as canned soups, chilled fruit juices, beers, wines & spirits, coffee and health & beauty.



Maintain a tidy shelf presentation in the blink of an eye



A time-saver: store staff can focus on providing support to customers.

Efficient facing and stock taking



Facer™ - The best-selling solution to make your category **more profitable**



HL DISPLAY AB (PUBL)
Cylindervägen 18 Box 1118
131 26 Nacka Strand
Sweden

Tel +46 8 683 73 00
Fax +46 8 683 73 01

www.hl-display.com
info@hl-display.com

